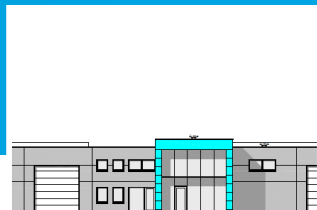


Investment Project : Phase 2

2016-2017



Axe(s)

Composites & Processes

Industries

SOBELCOMP

Research Bodies

-

Total Budget

2,5 M€

Type

Investment

Following various successful R&D projects performed over the last years, SOBELCOMP is facing a significant growth of the demand from its customers in Aeronautics, Defense and other industrial sectors.

This growth is also the result of another investment in a poly-articulated robot acquired in 2013.

As a consequence, SOBELCOMP must enlarge its production site in order to answer the demand of its customers, but also in order to avoid losing customers that are in a hurry. This should also allow the company to seduce or convince new customers.

A particular attention has been placed on the environmental aspects with the integration of an air depollution device in the new facilities.